

# ambre

MAURITIUS

A LIFE LED IN THE SUN,  
A LIFE ENJOYED WITH STYLE

Located at Palmar, on the untamed east coast of Mauritius, the four-star resort is an adults-only haven radiating Mauritian character and the bliss of escapism. Set on a 700-metre-long white sand beach, unfurling into a sparkling tropical lagoon, the resort is a castaway wonderland that houses 297 rooms.



## ALL THE SUITES ARE EQUIPPED WITH THE FOLLOWING FACILITIES:

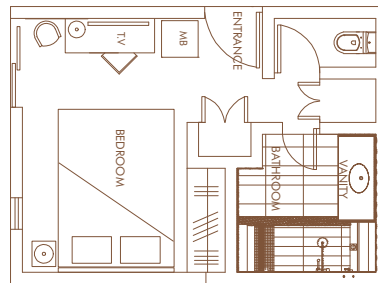
- Individually controlled air-conditioning
- Bathroom amenities, hairdryer and slippers
- Wi-Fi access
- Mini-bar with tea and coffee facilities
- Electronic safe

## ACCOMMODATION

### Superior Sea facing Room-42 m<sup>2</sup>

Situated in the northern or southern wing and on the first floor or second floor, the room comes with the option of twin or king-size beds and can include one extra bed.

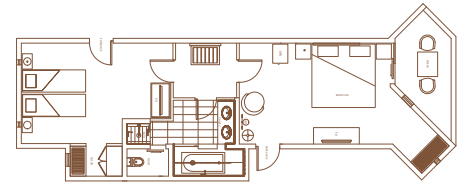
**Room occupancy:** 3 adults



### Deluxe Suite-72 m<sup>2</sup>

Available on the ground floor or first floor and feature separate shower and bathtub facilities with either balcony or terrace.

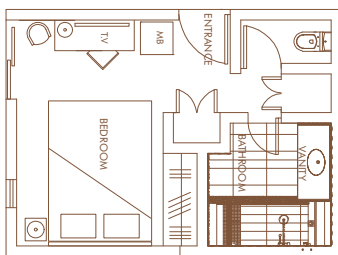
**Room occupancy:** 3 adults



### Courtyard Room-20 m<sup>2</sup>

Situated in the southern wing and offers rooms on the ground floor, first floor, and second floor.

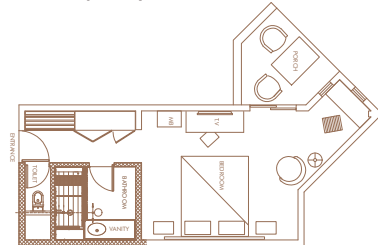
**Room occupancy:** 2 adults



### Deluxe Sea facing Room-30 m<sup>2</sup>

Situated in the northern or southern wing, the room is on the ground floor, first floor or second floor and comes with a balcony or terrace.

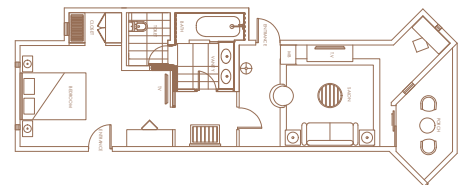
**Room occupancy:** 3 adults



### Ambre Suite-80 m<sup>2</sup>

Situated on the first floor and offers separate shower and bathtub amenities. Include a living room and a balcony. Additionally, the room provides convenient access to the beach.

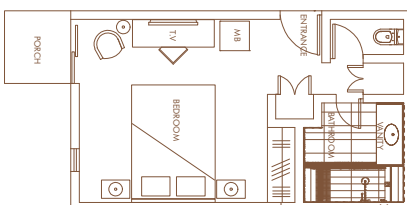
**Room occupancy:** 2 adults



### Superior Room-30 m<sup>2</sup>

Positioned in the northern wing and provides rooms on the ground floor, first floor, and second floor with a balcony or terrace.

**Room occupancy:** 2 adults



## ROOMS & SUITES POLICY

- Check-in time is at 2 pm and Check-out is at 12 pm (subject to availability, early check-in and late check-out options are offered at an additional cost)
- Deluxe Sea-facing rooms for people with reduced mobility, available upon request.
- Room service (not included in the All-Inclusive Package)
- Laundry, dry-cleaning and pressing service (at a cost)

# RESTAURANTS

Meal Plan	BREAKFAST			LUNCH		DINNER		
	HB	FB	AI	FB	AI	HB	FB	AI
<b>Indigo Restaurant</b>	6.30 am – 10.30 am			12.30 pm – 3 pm		6.30 pm– 10 pm		
Main restaurant with lively-themed nights	✓	✓	✓	✓	✓	✓	✓	✓
<b>Dolce Vita Restaurant</b>				12.30 pm – 3 pm		6.30 pm– 10 pm		
Italian à la carte in a trattoria-style setting				✓	✓	★ Rs 900 food credit for speciality chef menu	★ Rs 900 food credit for speciality chef menu	★ Rs 900 food credit for speciality chef menu
<b>La Plage Restaurant</b>				12.30 pm – 3 pm		6.30 pm– 10 pm		
Mauritian and Mediterranean fusion in an Alfresco setting				✓	✓	★ Rs 900 food credit for speciality chef menu	★ Rs 900 food credit for speciality chef menu	★ Rs 900 food credit for speciality chef menu
<b>Chef Cruise Cabana</b>				12.30 pm – 3 pm				
Light bites				✓	✓			

✓ Included ★ Selected items

## ALL-INCLUSIVE PACKAGE ADDITIONAL INCLUSIONS:

### Mini bar (One refill per day)

- Soft drinks, juices, water and beers

### Beverages

- Choice of imported quality wines (red/white/rosé) and sparkling wines
- Choice of locally bottled and selected imported spirits (whiskey, gin, vodka, martini, brandy, rums and liquors)
- Choice of cocktails, local beers, mineral water, soft drinks & milkshakes.

### Conditions

- The All-Inclusive package is effective from arrival until 6 pm on departure date, regardless of check-in and check-out times. It remains valid until midnight each day, and any consumption after midnight will be charged to the room account.
- Drinks/food not indicated as part of the "Sun Inclusive Holiday Package" (as per menu card) are not included.
- For personal consumption only – signature is required for control purposes for all consumptions.
- Lunch snack boxes for excursions available upon request (24 hours' notice required). Picnic-packed lunches are not allowed at Ile aux Cerfs Golf Club.
- Compulsory "All-Inclusive Day-Pass" fee payable at reception for any visitor wishing to join in-house guests.
- Groups and Incentives (please refer to our separate "Sun-Inclusive Group All-Inclusive Fact Sheet").
- All Inclusive does not apply for Ile aux Cerfs.



## BARS

### Coral Pool Bar

Open from 9 am to 12 am  
From a morning green juice to a night-time spritz, Coral Pool Bar is the place to rehydrate, rejuvenate and relax. Guests on the All-Inclusive meal plan can enjoy an Afternoon Tea every day as from 3 pm to 5 pm.

### Ti Bar

Open from 10 am to 11 pm  
Our informal sundowner cocktail bar on the beach

### Beach Service

Serving drinks from 10 am to 5 pm  
Meet our Beach Squad, a dynamic team of dedicated beach buddies ready to serve your every beachside need.

### H&H Lounge Bar

Open from 6 pm to 2 am  
(Beverages at a charge after 12 am)

The place to enjoy an array of tasty drinks, catch a sports game or for those included, karaoke.

### Shakers Night Club

Open from 11 pm to 2 am on selected days

### Dress code in restaurants & bars:

Casual chic in all our restaurants for dinner.

# SPORTS, LEISURE & WELLNESS

	LAND ACTIVITIES	WATER ACTIVITIES *
FREE	<ul style="list-style-type: none"> <li>• Stretching</li> <li>• Bocce Ball</li> <li>• Body Pump</li> <li>• Table Tennis</li> <li>• Beach Tennis</li> <li>• Beach Volley</li> <li>• Beach Soccer</li> <li>• Tennis (tennis balls are with supplement)</li> <li>• Aqua Gym</li> <li>• Sports Tournaments</li> </ul>	<ul style="list-style-type: none"> <li>• Kayaking</li> <li>• Laser Sails</li> <li>• Glass-Bottom Boat Trips</li> <li>• Snorkelling, Windsurfing</li> <li>• Paddle</li> <li>• Stand-up Paddle</li> <li>• Pedal Boats</li> </ul>
EXTRA COST	<ul style="list-style-type: none"> <li>• Bike Rental</li> <li>• Bike Tours</li> <li>• Private Tennis Lessons</li> </ul>	<ul style="list-style-type: none"> <li>• Big-Game Fishing**</li> <li>• Water Skiing**</li> <li>• Banana Boat**</li> <li>• Super Tube Rides**</li> <li>• Giant Catamaran Outings**</li> <li>• Discovery Excursions,</li> <li>• (submarine dives and dolphin)**</li> </ul>

\*All free water activities are on a first-come, first-served basis and those with a supplement, require a 24 hours booking (opening hours: 9 am to 5 pm)

\*\*Booking and payment should be made directly with our partners.

## GOLF

### Ile aux Cerfs

Ile aux Cerfs is a picturesque island spread over 87 hectares of untouched land off the east coast of Mauritius.

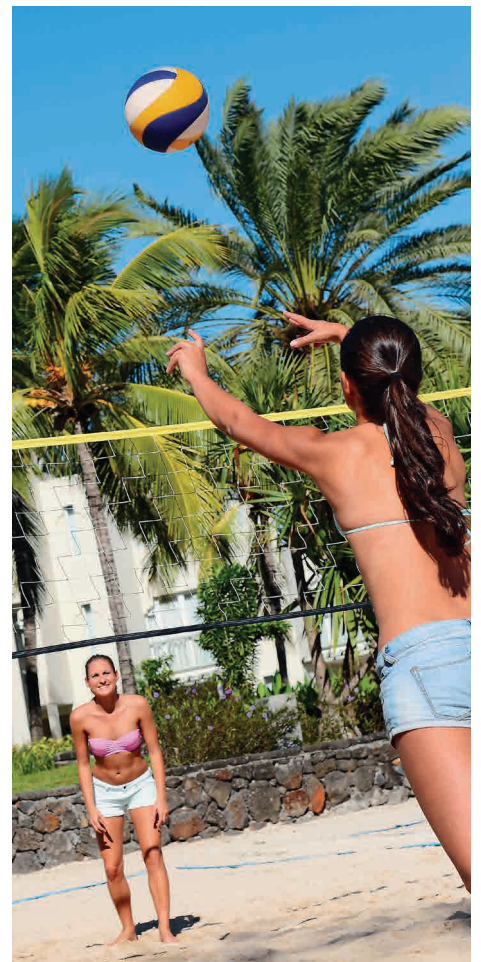
Applicable for golfers only:

- Free and unlimited green fees at Ile aux Cerfs Golf Club, including free land and boat transfers at Pointe Maurice Jetty (within operating hours).
- Free daily golf initiation at 11 am at Ile aux Cerfs Golf Academy.
- Set lunch menu for All-Inclusive guests available.



## TROPICAL SPA

Unwind at Ambre's Tropical Spa, set in a tranquil corner of the resort, with the beach and cyan ocean just metres away. The spa features a romantic outdoor area with two gazebos where you can indulge in a spa treatment while contemplating the ocean. To complement this authentic tropical experience, you can unwind in the steam room, sauna or bubble pool. Opening hours: 8.30 am to 7 pm



## PRACTICAL INFORMATION

### Other services

- Free Wi-Fi throughout the resort
- Boutique: open every day from 9 am to 7 pm
- Shower and luggage rooms for arrivals and departures
- 2 function rooms for corporate or private events:
- Ambre Conference Room: 155 m<sup>2</sup> – 90 pax in theatre style
- Palmar Conference Centre: 425 m<sup>2</sup> – 300 pax in theatre style
- On-site medical room
- Parking, taxi and car rental facilities
- Foreign currency exchange facilities at the reception
- Credit cards accepted: American Express, MasterCard, Diners Club and Visa
- A post box is available at the reception desk. Stamps and postcards are available for purchase at Ambre Gift Boutique.

### TERMS & CONDITIONS

- Families and guests sharing rooms or travelling as a party must book the same package (also applies for children).
- No compensation in cash or any kind will be offered for non-consumed items.
- Guests residing at the hotel are requested to inform reception when expecting a visit so that prior arrangements can be made.
- The hotel reserves the right to close any restaurant for / or during special events and due to bad weather conditions.
- Changes in selections, hours, accessibility or availability are possible at any time without prior notice.
- We reserve the right to increase our rates in the event of increased government taxation.

# RESORT LAYOUT

- 1 Main Entrance
- 2 Lobby
- 3 Reception
- 4 Life In Yellow Boutique
- 5 H&H Lounge & Shakers Nightclub
- 6 Conference Room
- 7 Ambre Hospitality Lounge
- 8 Medical Room
- 9 Parking
- 10 Fitness Centre
- 11 Bicycle Shed
- 12 Dolce Vita Restaurant
- 13 Lap Pool
- 14 Main Pool
- 15 Indigo Restaurant
- 16 Coral Bar
- 17 La Plage Restaurant
- 18 Towel Kiosk
- 19 Ti-Bar
- 20 Water Sports Centre
- 21 Beach
- 22 Tennis Courts
- 23 Outdoor Massage Kiosk
- 24 Spa
- 25 Palmar Conference Centre



ROOMS	
BLOCK	SOUTH WING
800 - 837	COURTYARD ROOM SUPERIOR SEA-FACING
700 - 717	COURTYARD ROOM SUPERIOR SEA-FACING
100 - 191	DELUXE SEA-FACING DELUXE SUITE AMBRE SUITE
BLOCK	NORTH WING
200-260	DELUXE SEA-VIEW DELUXE SUITE AMBRE SUITE
300-316	SUPERIOR GARDEN DELUXE SEA-FACING DELUXE SEA-VIEW
400-416	SUPERIOR GARDEN DELUXE SEA-VIEW DELUXE SEA-FACING
500-548	SUPERIOR GARDEN DELUXE SEA-FACING
600-616	SUPERIOR GARDEN DELUXE SEA-FACING