

# LONG BEACH

MAURITIUS

A BOLD, INNOVATIVE AND ENERGISED  
HOLIDAY EXPERIENCE

Capturing Mauritius' new style, but served with an elegant twist, this five-star resort on Belle Mare beach on the east coast is a tropical luxe playground for curious and adventurous travellers. Wake up every morning in one of the 255 beautifully curated rooms, to the sound of waves lapping across the coral reef lagoon, birds chirping and the light sea breeze wafting through the tropical gardens.





## ALL THE SUITES ARE EQUIPPED WITH THE FOLLOWING FACILITIES:

- Individually controlled air-conditioning
- Bathroom with bath, shower and separate toilets
- Bathroom amenities, hairdryer, bathrobe and slippers
- Wi-Fi access
- Mini-bar with complimentary tea and coffee
- Electronic safe
- 220 Volts international sockets

## ACCOMMODATION

### Junior Suite Beachfront-65 m<sup>2</sup>

Available on either the ground floor or first floor, guests can choose between twin or king-size beds.

Each suite comes with a private terrace or balcony. Accommodation offers direct beach access.

**Room occupancy:** 3 adults or 2 adults & 2 teens (or 2 children)

### Long Beach Suite-135 m<sup>2</sup>

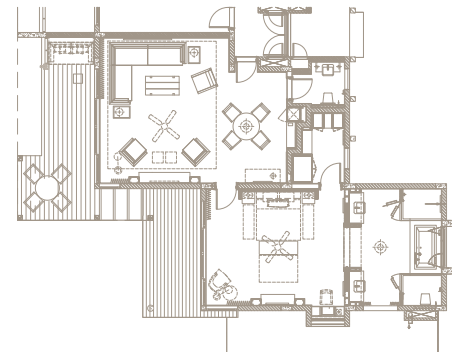
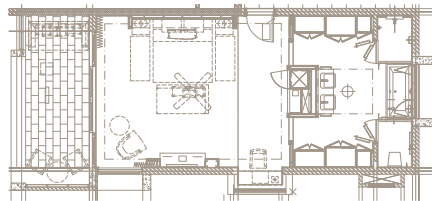
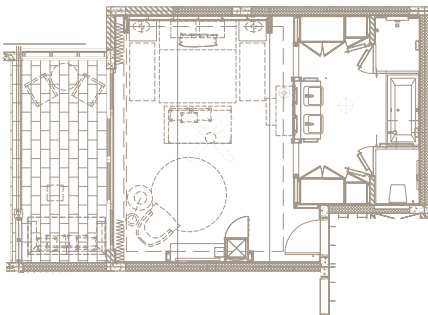
Offers ground floor suite equipped with a king-size bed and a walk-in wardrobe. Guests can enjoy a private terrace, providing direct beach access, including a private cocoon.

**Room occupancy:** 2 adults & 2 teens (or 2 children)

### Junior Suite-60 m<sup>2</sup>

Available on either the ground floor or first floor. Guests can choose between twin or king-size beds for their comfort. Each suite offers a private terrace.

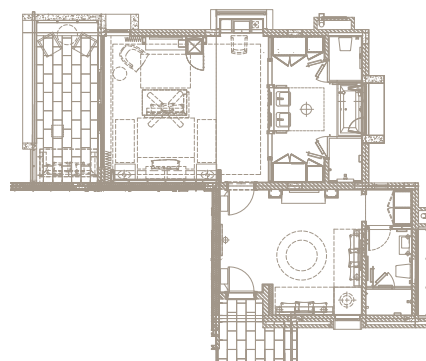
**Room occupancy:** 3 adults or 2 adults & 2 teens (or 2 children)



### Family Suite-85 m<sup>2</sup>

Available on either the ground floor or first floor. Each suite features a king-size bed. Guests can enjoy a private terrace or balcony, additionally; the suite includes a living area with a sofa bed.

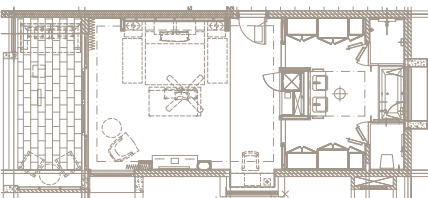
**Room occupancy:** 2 adults & 2 teens or 2 adults & 3 children



### Junior Suite Premium-65 m<sup>2</sup>

Guaranteed ground-floor suite provides the option of twin or king-size beds. Additionally, each suite offers a private terrace.

**Room occupancy:** 3 adults or 2 adults & 2 teens (or 2 children)



## ROOMS & SUITES POLICY

- Check-in time is at 2 pm and Check-out is at noon (subject to availability, early check-in and late check-out options are offered at an additional cost.)
- Junior Suites for people with reduced mobility, available upon request.
- Room service (tray charge applies)
- Laundry, dry-cleaning and pressing service (at a cost)

# RESTAURANTS

Meal Plan	BREAKFAST			LUNCH		DINNER		
	HB	FB	AI	FB	AI	HB	FB	AI
<b>Le Marché</b> Main restaurant featuring a live cooking arena and international buffets	6.30 am – 10.30 am					6.30 pm – 10 pm		
	✓	✓	✓			✓	✓	✓
<b>Sapori</b> A la carte Italian restaurant				12.30 pm – 3 pm		6.30 pm – 10 pm		
				★	★	★	★	★
<b>Tides</b> A la carte seafood restaurant				12 pm – 3 pm		6.30 pm – 10 pm		
				★	★	★	★	★
<b>Chopsticks</b> A la carte Asian-inspired restaurant				12.30 pm – 3 pm		6.30 pm – 10 pm		
				★	★	★	★	★
<b>Hasu</b> A la carte gastronomic Japanese restaurant						6.30 pm – 10 pm		
						With supplement	With supplement	With supplement
<b>Bar &amp; Pool Service</b> Light poolside menu				11 am – 5 pm				
				★	★			

✓ Included ★ Selected items

## ALL-INCLUSIVE PACKAGE ADDITIONAL INCLUSIONS:

### Mini bar (One refill per day)

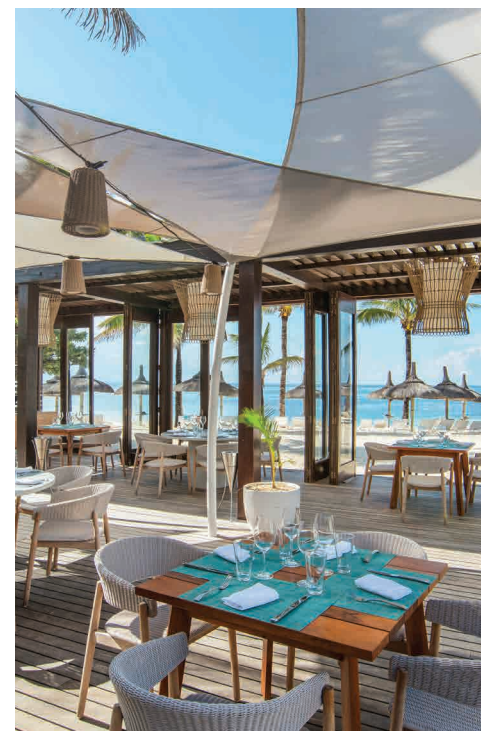
- Soft drinks, juices, water and beers

### Beverages

- Choice of imported quality wines (red/white/rosé) and sparkling wines
- Choice of locally bottled and selected imported spirits (whiskey, gin, vodka, martini, brandy, rums and liquors)
- Choice of cocktails, local beers, mineral water, soft drinks & milkshakes.

### Conditions

- The All-Inclusive package starts at check-in and ends at check-out.
- Drinks/food not indicated as part of the "Sun Inclusive Holiday Package" (as per menu card) are not included.
- For personal consumption only – signature is required for control purposes for all consumptions.
- Lunch snack boxes for excursions available upon request (24 hours' notice required). Picnic-packed lunches are not allowed at Ile aux Cerfs Golf Club.
- Compulsory "All-Inclusive Day-Pass" fee payable at reception for any visitor wishing to join in-house guests.
- Groups and Incentives (please refer to our separate "Sun-Inclusive Group All-Inclusive Fact Sheet").
- All Inclusive does not apply for Ile aux Cerfs.



## BARS

### Shores Bar

Open from 11 am to 11 pm  
Serving an international selection of drinks with an accent on tropical cocktails.

### Tides Pool & Beach Bar

Open from 11 am to 11 pm  
Best place to enjoy some refreshments and local cocktails, complete with a poolside menu.

**Dress code in restaurants & bars:**  
Resort chic in the evening.



# SPORTS, LEISURE & WELLNESS

	LAND ACTIVITIES	WATER ACTIVITIES *
FREE	<ul style="list-style-type: none"> <li>• 216m<sup>2</sup> gym (equipped with Technogym)</li> <li>• Fitness activities (as per weekly programme)</li> <li>• Beach volley</li> <li>• Football (7 a side)</li> <li>• Wall climbing</li> <li>• Mini Golf, Badminton</li> <li>• Table tennis</li> <li>• Bocci ball</li> <li>• 3 Tennis courts (new tennis balls at extra charge)</li> <li>• 1 multiuse court</li> <li>• 4 Pools (including a lap pool and a kid's pool)</li> <li>• Unlimited free green fees at Ile aux Cerfs and Anahita</li> <li>• Access to Ile aux Cerfs Leisure Island</li> </ul>	<ul style="list-style-type: none"> <li>• Windsurf</li> <li>• Stand-up paddle</li> <li>• Giant stand-up paddle</li> <li>• Pedal boat</li> <li>• Single &amp; Double kayaks</li> <li>• Hobie cat</li> <li>• Glass Bottom Boat</li> <li>• Snorkelling</li> <li>• Aqua gym •</li> <li>• Water polo</li> </ul>
EXTRA COST	<ul style="list-style-type: none"> <li>• Personal training (fitness or tennis)</li> <li>• Discovery bike tour to Flacq and Belle Mare</li> <li>• Bicycle rental</li> <li>• Spice Spoon cultural market tour and cooking experience,</li> <li>• Archery classes</li> <li>• Yoga and pilates classes</li> </ul>	<ul style="list-style-type: none"> <li>• Water ski**</li> <li>• Sunrise kayak**</li> <li>• Deep sea fishing**</li> <li>• Scuba diving**</li> <li>• Kite surf**</li> </ul>

\*All free water activities are on a first-come, first-served basis and those with a supplement require a 24-hr booking made directly at the Boat House (opening hours: 9 am – 5 pm).

\*\*Off property: Booking and payment are to be done directly with our partners.

## GOLF

### Ile aux Cerfs

Ile aux Cerfs is a picturesque island spread over 87 hectares of untouched land off the east coast of Mauritius.

Applicable for golfers only:

- Free return land and boat transfers at Pointe Maurice Jetty (within operating hours) for Ile aux Cerfs Golf Club.
- Free daily golf initiation at 11 am at Ile aux Cerfs Golf Academy.
- Lunch including soft drinks, within the All-Inclusive meal option, is applicable at Langer's Bar & Grill, based at Ile aux Cerfs Golf Club.

### Anahita

- Free and unlimited green fees at Anahita Golf Club, including free return land shuttle transfers.



## SPA

Our Spa offers tailored, holistic treatments with authentic Mauritian touch. Our therapists are skilled in the art of wellness and relaxation and our spa is the ideal place for a relaxed and cleansed body.

- 9 single and 3 double treatment rooms (including one with a Japanese bath)
- Outdoor spa pavilion immersed in a tropical garden
- Beauty Parlour with a hair salon, manicure and pedicure facilities
- 51m<sup>2</sup> Hammam

Opening hours: 9 am to 7 pm



## SUNLIFE KIDS CLUB

Sunlife Kids Club welcomes children between 2 and 11 years old and provides exciting and creative daily fun programmes with age-appropriate activities, facilities and amenities.

Children of 2 to 3 years old must be accompanied by a parent or a babysitter if they are not potty-trained.

Professionally trained nannies are available on request at an extra charge.

Opening hours: 9.30 am to 10 pm (closed between 5 pm and 6 pm)

## SUNLIFE TEENS CLUB

Sunlife Teens Club welcomes teens from 12 to 17 year olds who can enjoy a special sports and recreation programme as well as thrilling outings and excursions.

Opening hours: 10 am to 10 pm

### TERMS & CONDITIONS

- Families and guests sharing rooms or travelling as a party must book the same package (also applies for children).
- No compensation in cash or any kind will be offered for non-consumed items.
- Guests residing at the hotel are requested to inform reception when expecting a visit so that prior arrangements can be made.

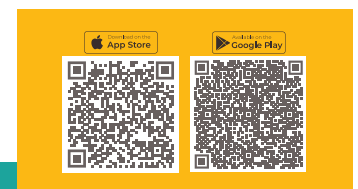
# COME ALIVE COLLECTION

Sunlife launches the Come Alive Collection, a series of experiences and activities inviting their guests to Come Alive. Discover the Come Alive Experience at Long Beach with Transforming the Piazza, Biodiversity trail, Santé and much more.



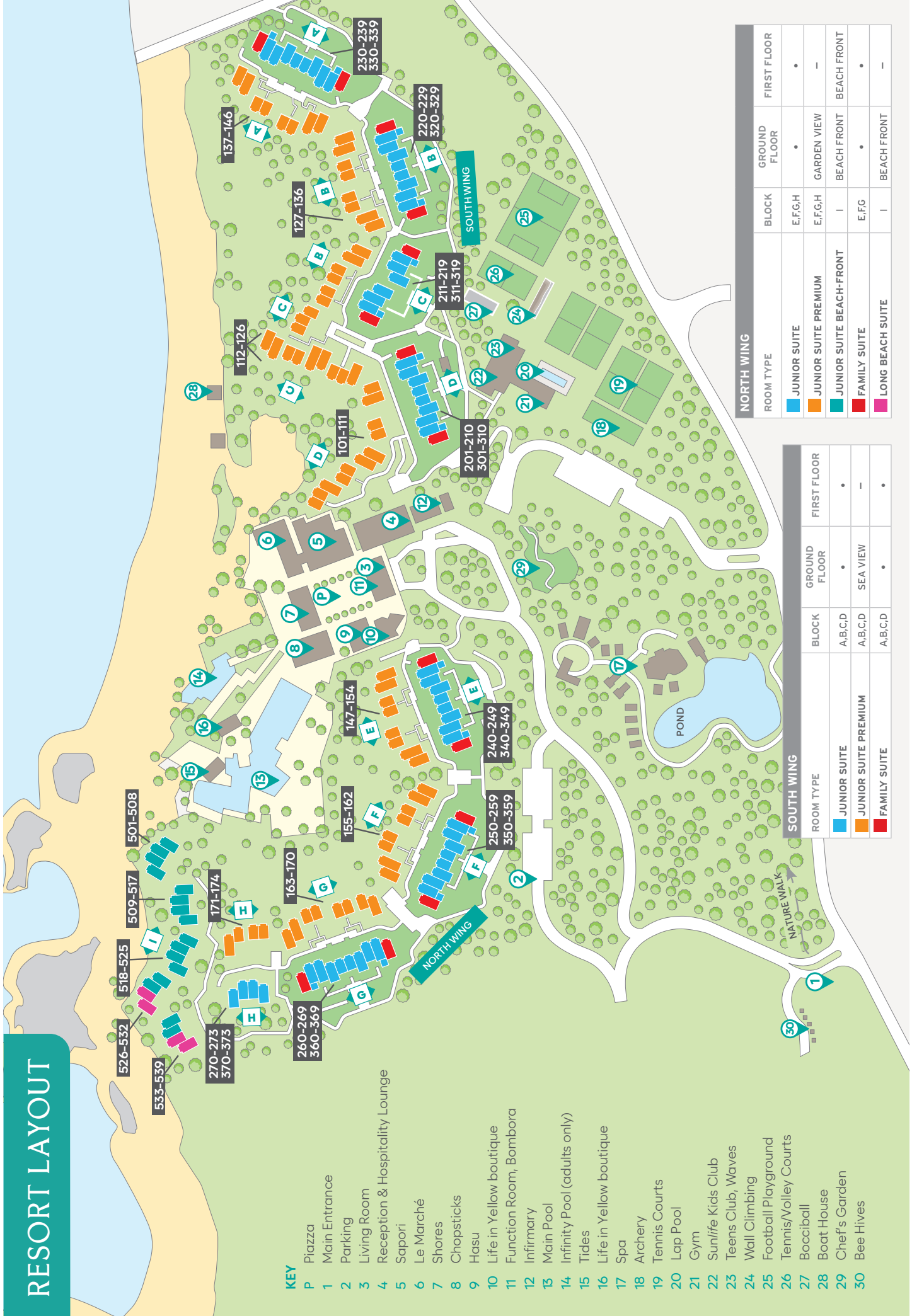
## PRACTICAL INFORMATION

- Free Wi-Fi in rooms and in public areas
- Boutiques open every day from 9 am to 7 pm
- Shower and luggage rooms for arrivals and departures
- Conference rooms for corporate and private events
- On-site infirmary
- Parking & taxi facilities
- Foreign currency exchange facilities at the reception
- Credit cards accepted: Visa, MasterCard and American Express
- Download the Sunlife Mobile App to enhance your experience



- The hotel reserves the right to close any restaurant for / or during special events and due to bad weather conditions.
- Changes in selections, hours, accessibility or availability are possible at any time without prior notice.
- We reserve the right to increase our rates in the event of increased government taxation.

# RESORT LAYOUT



## KEY

- P Plaza
- 1 Main Entrance
- 2 Parking
- 3 Living Room
- 4 Reception & Hospitality Lounge
- 5 Sapori
- 6 Le Marché
- 7 Shores
- 8 Chopsticks
- 9 Hasu
- 10 Life in Yellow boutique
- 11 Function Room, Bombora
- 12 Infirmary
- 13 Main Pool
- 14 Infinity Pool (adults only)
- 15 Tides
- 16 Life in Yellow boutique
- 17 Spa
- 18 Archery
- 19 Tennis Courts
- 20 Lap Pool
- 21 Gym
- 22 Sun/ife Kids Club
- 23 Teens Club, Waves
- 24 Wall Climbing
- 25 Football Playground
- 26 Tennis/Volley Courts
- 27 Boccia
- 28 Boat House
- 29 Chef's Garden
- 30 Bee Hives

NORTH WING				
ROOM TYPE	BLOCK	GROUND FLOOR	FIRST FLOOR	
JUNIOR SUITE	E,F,G,H	•	•	
JUNIOR SUITE PREMIUM	E,F,G,H	GARDEN VIEW		
JUNIOR SUITE BEACH-FRONT	I	BEACH FRONT	BEACH FRONT	
FAMILY SUITE	E,F,G	•	•	
LONG BEACH SUITE	I	BEACH FRONT		

SOUTH WING				
ROOM TYPE	BLOCK	GROUND FLOOR	FIRST FLOOR	
JUNIOR SUITE	A,B,C,D	•	•	
JUNIOR SUITE PREMIUM	A,B,C,D	SEA VIEW		
FAMILY SUITE	A,B,C,D	•	•	