

SUGAR BEACH

MAURITIUS

AN OPULENT AND GLAMOUROUS
HOLIDAY EXPERIENCE

Sugar Beach, the enchanting manor-style resort, nestled amongst lush greenery on the sun-drenched beaches of Flic-en-Flac, oozes glamour and opulence, blended with the mystique and magic of Mauritius. The delightful five-star resort houses 238 rooms including two Executive Suites and 20 Premium Suites across the Manor house and 16 Creole-style Villa Houses.

Guests residing at Sugar Beach have access to all facilities in our neighbouring sister resort, La Pirogue (upon reservation).



ACCOMMODATION

ALL THE ROOMS ARE EQUIPPED WITH THE FOLLOWING FACILITIES:

- Individually controlled air-conditioning
- Private bathroom with shower and separate toilets
- Bathroom amenities, hairdryer, bathrobe and slippers
- IP TV system
- Desk with plug points and USB ports
- WI-FI access
- Mini-bar with complimentary tea and coffee
- Electronic safe
- 220 Volts international sockets

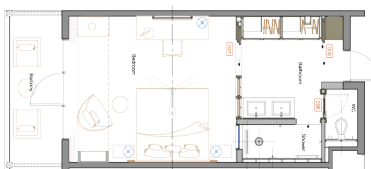
Deluxe Seaview Room-40 m²

Situated in both Creole-style Villa Houses and Manor House. Available on the first or second floor and offers twin or king-size beds. Each room also comes with a private balcony.
Room Occupancy: 3 adults or 2 adults & 1 teen (or 1 child)



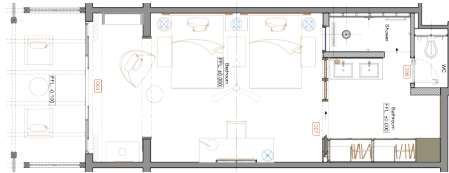
Deluxe Beachfront Room-40 m²

Located in Creole-style Villa Houses and specifically offers rooms on the first floor. Guests can choose between twin or king-size beds, and each room includes a private balcony.
Room Occupancy: 3 adults or 2 adults & 1 teen (or 1 child)



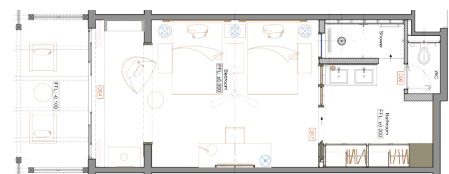
Premium Seaview Room-50 m²

Situated in both Creole-style Villa Houses and Manor House. Located on the ground floor and offer a choice of twin, queen-size, or king-size beds. Connecting rooms are available for convenience. Each room features a private terrace.
Room Occupancy: 3 adults or 2 adults & 2 teens (or 2 children)



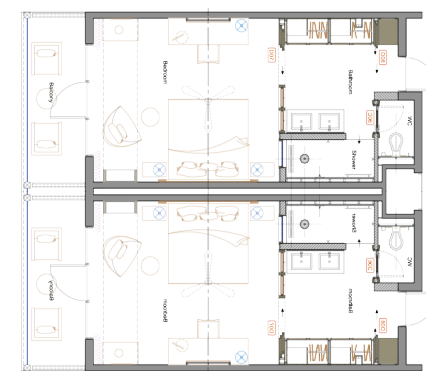
Premium Beachfront Room-50 m²

Situated in the Creole-style Villa Houses and offers ground-floor rooms. Guests can choose between twin, queen-size, or king-size beds. Each room includes a private terrace and provides direct beach access. Connecting rooms are available for convenience.
Room occupancy: 3 adults or 2 adults & 2 teens (or 2 children)



Family Room-80 m²

Situated in Manor House and offers room on the ground floor or first floor. The room features twin and king-size beds and provides a private balcony or terrace.
Room occupancy: 3 adults or 2 adults & 3 teens (or 3 children)



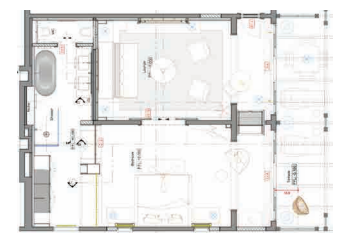
Premium Suite-100 m²

These suites, located within the Creole-style villa houses, consist of a bedroom with king-size bed (bathroom) and a separate living room with a convertible double sofa bed (shower room), both with private terraces.
Room occupancy: 3 adults or 2 adults & 2 teens (or 2 children)



Executive Beachfront Suite-100 m²

The suites are located on the ground floor and can be connected to a Premium Beachfront Room. Each suite features a king-size bed, a living area, a walk-in closet, and a spacious bathroom with a standalone bathtub. Guests can also enjoy a private terrace and have direct access to the beach.
Room occupancy: 2 adults



ROOMS & SUITES POLICY

- Check-in time is at 2 pm and Check-out is at noon (subject to availability, early check-in and late check-out options are offered at an additional cost)
- Premium Seaview accessibles aux personnes à mobilité réduite, disponibles sur demande
- 24/7 room service. A restricted cold plate menu is available as from 10 pm. (tray charge applicable)
- Laundry, dry-cleaning and pressing service available at a cost

RESTAURANTS

Meal Plan	BREAKFAST			LUNCH		DINNER		
	HB	FB	AI	FB	AI	HB	FB	AI
Le Patio Main restaurant serving an array of delicious international dishes	7 am – 10.30 am			12.30 pm – 3 pm		6 pm – 10 pm		
	✓	✓	✓	★	★	✓	✓	✓
Citronella's Beach Lounge Restaurant A la carte Mediterranean restaurant				12.30 pm – 3 pm		7 pm – 10 pm		
				★	★	★	★	★
Buddha Bar Beach A la carte fusion restaurant				12.30 pm – 3 pm		7 pm – 10 pm		
						✓ Rs 900 food credit	✓ Rs 900 food credit	✓ Set Menu
Bar & Pool Service Light poolside menu				9 am – 5 pm				
				★	★			

✓ Included ★ Selected items

ALL-INCLUSIVE PACKAGE ADDITIONAL INCLUSIONS:

Mini bar (One refill per day)

- Soft drinks, juices, water and beers

Beverages

- Choice of imported quality wines (red/white/rosé) and sparkling wines
- Choice of locally bottled and selected imported spirits (whiskey, gin, vodka, martini, brandy, rums and liquors)
- Choice of cocktails, local beers, mineral water, soft drinks & milkshakes.

Conditions

- The All-Inclusive package starts at check-in and ends at check-out.
- Drinks/food not indicated as part of the "Sun Inclusive Holiday Package" (as per menu card) are not included.
- For personal consumption only – signature is required for control purposes for all consumptions.
- Compulsory "All-Inclusive Day-Pass" fee payable at reception for any visitor wishing to join in-house guests.
- Groups and Incentives (please refer to our separate "Sun-Inclusive Group All-Inclusive Fact Sheet").
- All-Inclusive does not apply for Ile aux Cerfs, Long Beach and Ambre.



BARS

Buddha-Bar Beach

Open from 9am to 1 am
Exceptional cocktails in a breathtaking setting.

Le Patio Bar

Open from 9 am to 11 pm
Serving a great selection of drinks in the main restaurant.

Citronella's Bar

Open from 10 am to 11 pm
Adjacent to Citronella's Beach Lounge Restaurant, the bar serves aperitifs before lunch and dinner.

The Tea Room

Serving a variety of tea from around the world (with supplement).
Open all day.

Dress code in restaurants & bars:
Resort chic in the evening.

Access to La Pirogue's restaurants and bars upon availability.

SPORTS, LEISURE & WELLNESS

	LAND ACTIVITIES	WATER ACTIVITIES *
FREE	<ul style="list-style-type: none"> • 300m² fitness centre • Fitness activities (as per weekly programme) • Soccer game • Beach volley • Table tennis • Bocci ball • 5 Tennis courts (new tennis balls at extra charge) • 2 Pools (1 adult only) • The Martial Arts area - taе bo-, kickboxing, Judo and karate • Unlimited free green fees at Ile aux Cerfs and Tamarina 	<ul style="list-style-type: none"> • Windsurf, • Stand-up paddle • Giant stand-up paddle • Pedal boat • Single & Double kayaks • Hobie cat • Glass Bottom Boat • Snorkelling • Aqua gym • Water polo
EXTRA COST	<ul style="list-style-type: none"> • Padel Tennis • Personal training (fitness or tennis) 	<ul style="list-style-type: none"> • Water ski • Deep sea fishing • Scuba diving (PADI open water courses available) • Catamaran cruises

*All free water activities are on a first-come, first-served basis and those with a supplement require a 24-hr booking made directly at the Boat House (opening hours: 9 am – 5 pm)

GOLF

Ile aux Cerfs

Ile aux Cerfs is a picturesque island spread over 87 hectares of untouched land off the east coast of Mauritius.

Applicable for golfers only:

- Free and unlimited green fees at Ile aux Cerfs Golf Club, including free boat transfers at Pointe Maurice Jetty (within operating hours).
- Free daily golf initiation at 11 am at Ile aux Cerfs Golf Academy.
- Lunch including soft drinks, within an All-Inclusive meal option, is applicable at Ile aux Cerfs Golf Club.

Tamarina

- Free and unlimited green fees at Tamarina Golf Club, including free return land shuttle transfers.



SPA

Our Spa offers tailored, holistic treatments with authentic Mauritian touch. Our therapists are skilled in the art of wellness and relaxation and our spa is the ideal place for a relaxed and cleansed body.

- 6 single and 2 double treatment rooms
- 2 beauty treatment rooms
- Heated pool in the hammam
- Dedicated shiatsu treatment area
- Fully-equipped hairdressing salon for men and women

Opening hours: 9 am to 7 pm



SUNLIFE KIDS CLUB

Sunlife Kids Club welcomes children between 2 and 11 years old and provides exciting and creative daily fun programmes with age-appropriate activities, facilities and amenities.

Children of 2 to 3 years old must be accompanied by a parent or a babysitter if they are not potty-trained.

Professionally trained nannies are available on request at an extra charge.

Opening hours: 9.30 am to 10 pm

SUNLIFE TEENS CLUB

Sunlife Teens Club welcomes teens from 12 to 17 year olds who can enjoy a special sports and recreation programme as well as thrilling outings and excursions.

Opening hours: 10 am to 10 pm

TERMS & CONDITIONS

- Families and guests sharing rooms or travelling as a party must book the same package (also applies for children).
- No compensation in cash or any kind will be offered for non-consumed items.
- Guests residing at the hotel are requested to inform reception when expecting a visit so that prior arrangements can be made.

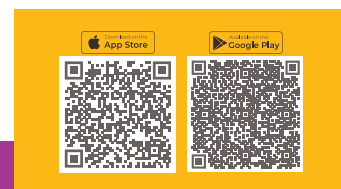
COME ALIVE COLLECTION

Sunlife launches the Come Alive Collection, a series of experiences and activities inviting their guests to Come Alive. Discover the Come Alive Experience at Sugar Beach with the Crazy Croquet, l'Atelier des Sens, Beauty Bubble and much more.



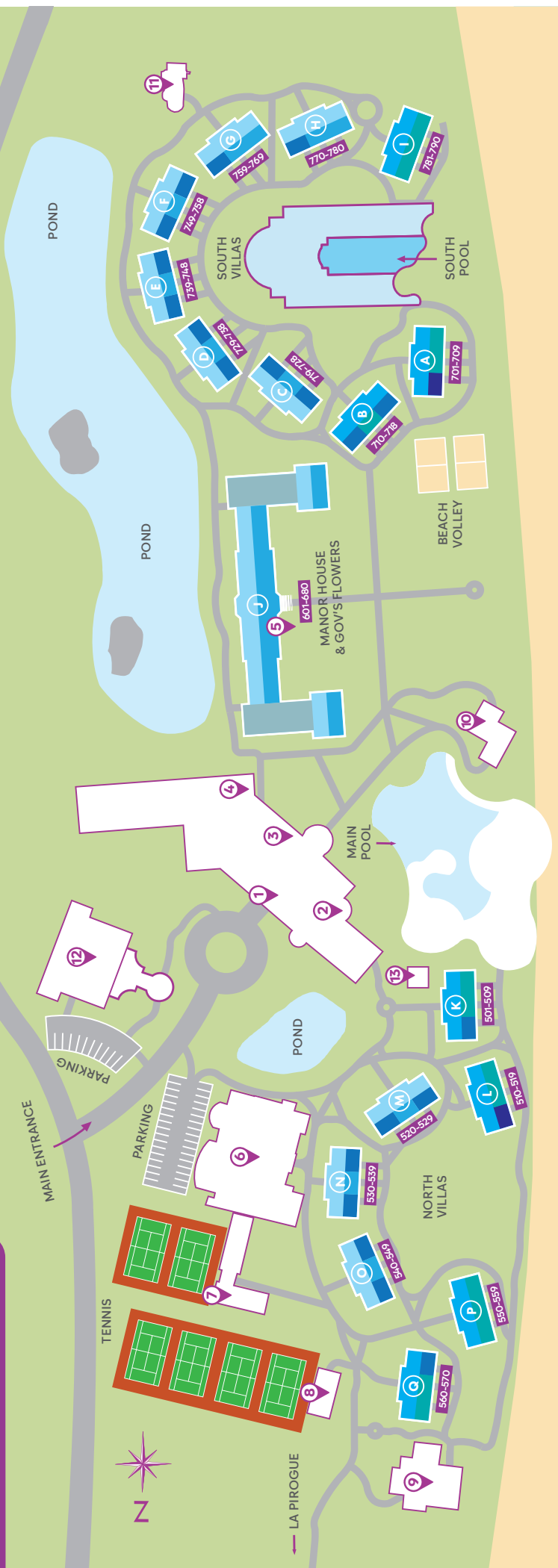
PRACTICAL INFORMATION

- Free Wi-Fi in rooms and in public areas
- Boutiques: open every day from 9 am to 7 pm
- Shower and luggage rooms for arrivals and departures
- 300m² function rooms for corporate and private events, accommodating up to 300 people
- On-site infirmary
- Parking & taxi facilities
- Foreign currency exchange facilities at the reception
- Credit cards accepted: Visa, MasterCard, American Express and Maestro (local)
- Download the Sunlife Mobile App to enhance your experience



- The hotel reserves the right to close any restaurant for / or during special events and due to bad weather conditions.
- Changes in selections, hours, accessibility or availability are possible at any time without prior notice.
- We reserve the right to increase our rates in the event of increased government taxation.

RESORT LAYOUT



- Sea
- Swimming Pool
- Beach
- Pond

- 1** Reception Area, The Tea Room, Boutique
- 2** Le Patio
- 3** Le Patio Bar
- 4** Welcome & Departure Lounges
- 5** Gov's Flowers
- 6** Spa
- 7** AURA Fitness Centre
- 8** Sun Members Club
- 9** Citronella's Beach Lounge Restaurant
- 10** Buddha-Bar Beach
- 11** Sun/ife Kids Club
- 12** Convention Centre
- 13** Life in Yellow Boutique

		K	L	M	N	O	P	Q		
NORTH VILLAS										
	DELUXE SEA VIEW ROOM			524-529	534-539	544-549				
	DELUXE BEACH FRONT ROOM	506-509	516-519				556-559	565-570		
	PREMIUM SEA VIEW ROOM			521-522	531-532	541-542				
	PREMIUM BEACH FRONT ROOM	501-504	510-512, 514				550-555	561-564		
	PREMIUM SUITE	505		520 & 523	530 & 533	540 & 543		560		
	EXECUTIVE BEACH FRONT SUITE			515						
MANOR HOUSE		J								
	DELUXE SEA VIEW ROOM/FAMILY ROOM	637-640, 647-662, 669-672 (First Floor) — 673-680 (Second Floor)								
	PREMIUM SEA VIEW ROOM	601-604, 611-626, 633-636 (Ground Floor)								
SOUTH VILLAS		A	B	C	D	E	F	G	H	I
	DELUXE SEA VIEW ROOM			723-728	733-738	743-748	753-758	764-769	775-780	
	DELUXE BEACH FRONT ROOM	706-709	715-718							787-790
	PREMIUM SEA VIEW ROOM			720-721	730-731	740-741	750-751	759-762	770-773	
	PREMIUM BEACH FRONT ROOM	701-704	711-712							781-786
	PREMIUM SUITE			719 & 714	729 & 732	739 & 742	749 & 752	763	774	
	EXECUTIVE BEACH FRONT SUITE	705								

ROOMS