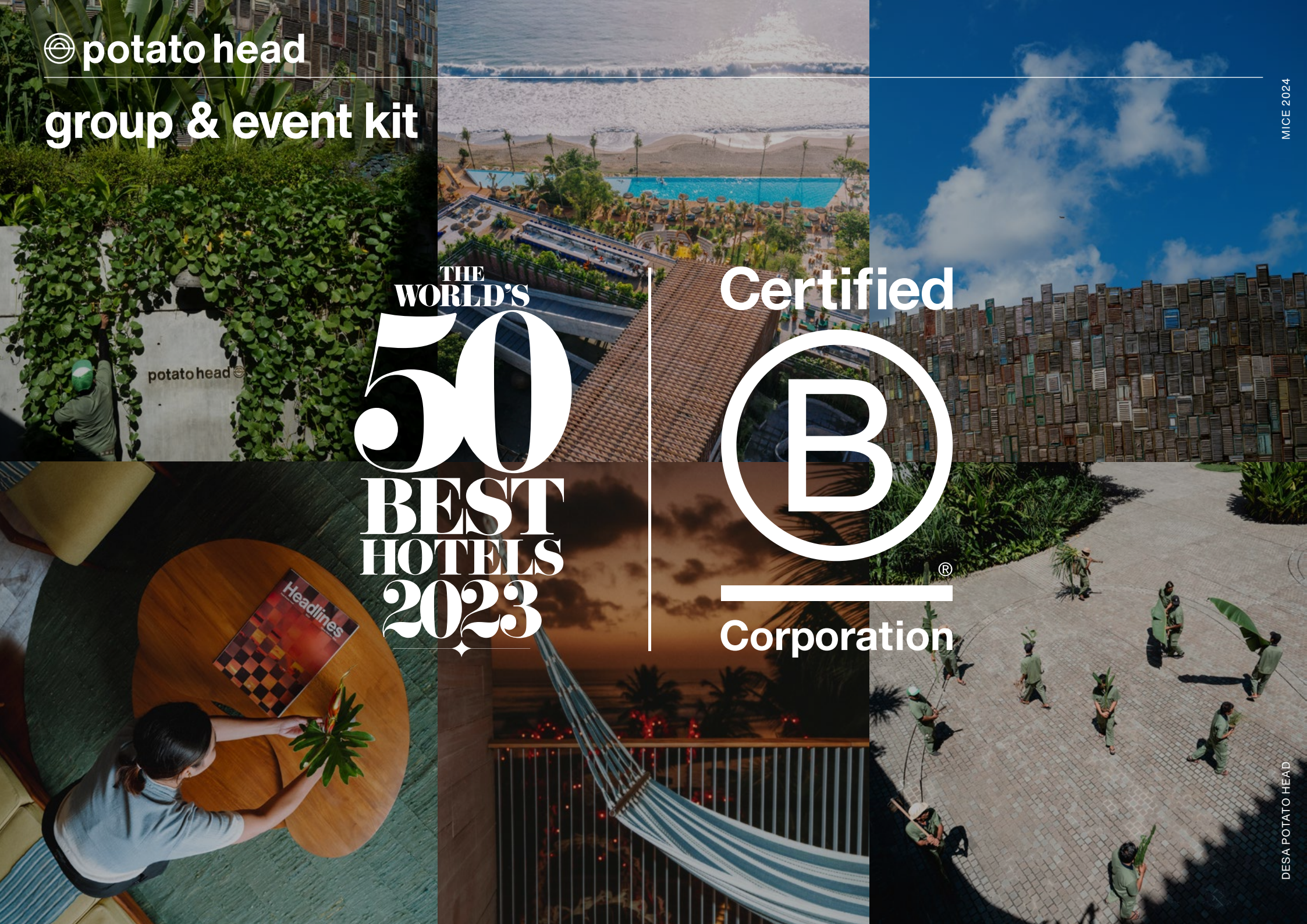


© potato head
group & event kit

THE
WORLD'S
50
BEST
HOTELS
2023

Certified
B
Corporation





Good Times, Do Good.

**Potato Head started with a simple desire:
create a casual restaurant with great food and drinks,
and never take ourselves too seriously.**

**As more people joined, we expanded the idea
to a beach club for friends to have good times
in an amazing space.**

**We recognised that Good Times
are made better by Doing Good.**



our offer

Welcome to the creative playground that embodies the world we want to live in, create, and dream in.

Rooms

Our group booking service is designed to accommodate your needs when reserving eight (8) rooms and above. Whether you are planning a corporate event, a family reunion, or any large gathering, we make the booking process seamless and convenient.

Spaces

Our oceanside village is home to range of venues and event spaces available for private hire, providing a backdrop for all kinds of group - from weddings and birthdays to meetings and corporate events.

Experiences

Whether via wellness, sustainability workshops or our cultural program, we may help arrange all manner of personalized activities to enhance your event.

Feast

Our culinary offerings make the most of sustainable and locally sourced ingredients, catering to all kinds of tastes, including authentic Indonesian, plant-based, and international comfort food.

Art and Music

Creativity is at the core of everything we do at Desa Potato Head. We view art and design as a vehicle for change, showcasing our sustainability message through the art installations, furniture and architecture around the Desa. Our music program reflects our eclectic tastes, featuring international DJs and live musicians alongside homespun talent.



Het is mijn gewoonte niet romans te
schrijven, of zulke dingen, en het heeft
dan ook lang geduld voor ik er toe
overging een paar riem papier extra te
bestellen en het werk aant...

rooms





potato head suites

Ancient craftsmanship. Modern aesthetics.

The artisan hotel formerly known as Katamama. Your home away from home, a place where you can create, relax and get inspired. Rediscover our suites, the soul of our Desa. A centre for creativity, design and innovation with stunning views to the ocean.



potato head suites

island suite

The 82 sqm suite-view Island Suites feature a king size bed, walk-in wardrobe, and living area with a bespoke work desk.



| | |
|-----------------|---------------------------------|
| AREA | 82 sqm |
| BEDDING | 200x200cm (Super King) |
| CAPACITY | 2 adults |
| VIEW | suites view |
| FACILITIES | bathtub + shower |
| | beach club pool + daybed access |
| | gym + spa access |
| TOTAL INVENTORY | 45 |

pool suite

Utilising 140 sqm, the Pool Suites feature a king-size bed and freestanding bath as well as a spacious living area and a private decked pool.



| | |
|-----------------|---------------------------------|
| AREA | 140 sqm |
| BEDDING | 200x200cm (Super King) |
| CAPACITY | 2 adults |
| VIEW | garden view |
| FACILITIES | pool, bathtub + shower |
| | beach club pool + daybed access |
| | gym + spa access |
| TOTAL INVENTORY | 3 |

family suite

The 140 sqm Two Bedroom Suites feature a master bedroom with a king size bed and a second bedroom with twin beds and a spacious living area.



| | |
|-----------------|---|
| AREA | 140 sqm |
| BEDDING | 200x200cm (Super King) + 120x200cm (Twin) |
| CAPACITY | 4 adults |
| VIEW | courtyard view |
| FACILITIES | bathtub + shower |
| | beach club pool + daybed access |
| | gym + spa access |
| TOTAL INVENTORY | 2 |



potato head suites

rooftop suite

The spacious 268 sqm Rooftop Suites feature a king size bed, open plan living and dining area with floor to ceiling windows, and a private rooftop garden overlooking the Indian Ocean.



| | |
|-----------------|---|
| AREA | 268 sqm |
| BEDDING | 200x200cm (Super King) |
| CAPACITY | 2 adults |
| VIEW | partial ocean + desa view |
| FACILITIES | living & dining area, bathtub, shower, outdoor jacuzzi beach club pool + daybed access, gym + spa access |
| TOTAL INVENTORY | 7 |

katamama suite

Across 320 sqm of space, the Katamama Suite features two bedrooms with king-size beds, an open plan living, and dining room area, as well as a private sea-facing rooftop garden equipped with a jacuzzi and lounge area.



| | |
|-----------------|---|
| AREA | 320 sqm |
| BEDDING | 200x200cm (Super King) + 200x200cm (Super King) |
| CAPACITY | 4 adults |
| VIEW | partial ocean + desa view |
| FACILITIES | living & dining area, bathtub, shower, jacuzzi beach club pool + daybed access, gym + spa access |
| TOTAL INVENTORY | 1 |



potato head studios

Progressive design. Future living.

Potato Head Studios is our newest hotel located at the heart of Desa Potato Head, Seminyak. Created in collaboration with Dutch design house OMA, the 167-room building wraps around a vast courtyard peppered with art installations and creative activities.





potato head studios

sunrise studio

A quaint studio with all Potato Head amenities.



| | |
|-----------------|--------------------------|
| AREA | 36 sqm |
| BEDDING | 180x200cm (King) |
| CAPACITY | 2 adults |
| VIEW | semyak view |
| FACILITIES | bathroom + shower |
| | beach club pool + daybed |
| | gym + spa access |
| TOTAL INVENTORY | 32 |

bamboo studio

A tranquil studio with views of our bamboo garden.



| | |
|-----------------|--------------------------|
| AREA | 36 sqm |
| BEDDING | 180x200cm (King) |
| CAPACITY | 2 adults |
| VIEW | bamboo garden view |
| FACILITIES | bathroom + shower |
| | beach club pool + daybed |
| | gym + spa access |
| TOTAL INVENTORY | 58 |

desa studio

An intimate studio overlooking the heart of our Desa.



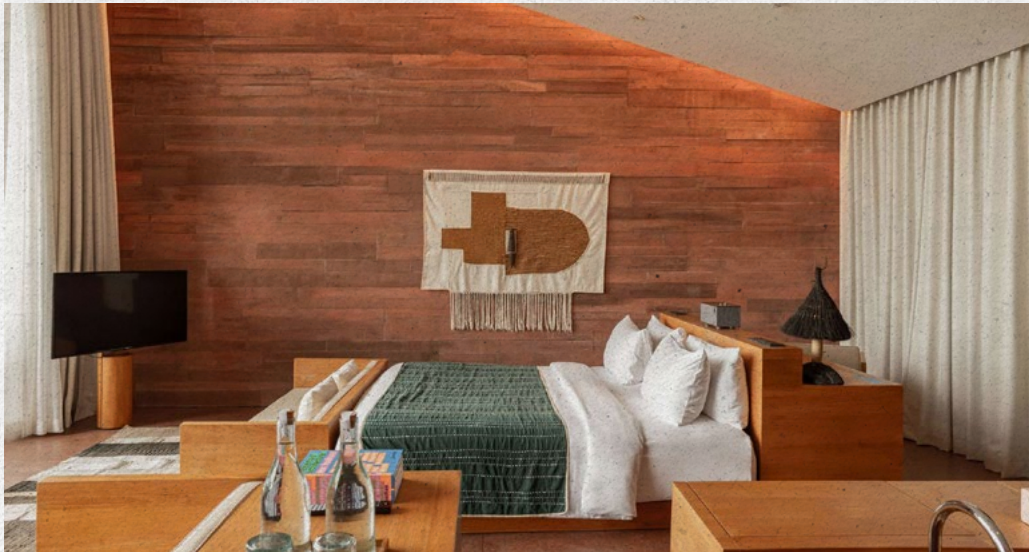
| | |
|-----------------|--------------------------|
| AREA | 36 sqm |
| BEDDING | 180x200cm (King) |
| CAPACITY | 2 adults |
| VIEW | desa view |
| FACILITIES | bathroom + shower |
| | beach club pool + daybed |
| | gym + spa access |
| TOTAL INVENTORY | 47 |



potato head studios

resident studio

A lofty 75sqm accommodation with double-height ceilings on the 4th floor of Potato Head Studios.



| | |
|-----------------|---------------------------------|
| AREA | 75 sqm |
| BEDDING | 200x200cm (Super King) |
| CAPACITY | 2 adults |
| VIEW | courtyard view |
| FACILITIES | wooden bathtub + shower |
| | beach club pool + daybed access |
| | gym + spa access |
| TOTAL INVENTORY | 6 |

oceanfront studio

An ocean-facing studio with the ultimate sunset view. Stylishly unique in decor and experience, the Oceanfront Studio at Potato Head Studios feature spacious layouts, luxury amenities, and expansive windows that reveal stunning views of the ocean.



| | |
|-----------------|---------------------------------|
| AREA | 72 sqm |
| BEDDING | 200x200cm (Super King) |
| CAPACITY | 2 adults |
| VIEW | ocean view |
| FACILITIES | wooden bathtub + shower |
| | beach club pool + daybed access |
| | gym + spa access |
| TOTAL INVENTORY | 24 |



buy out option

potato head suites & potato head studios

**Inventory 58 Suites & 167 studios
(Total 225 Guestrooms)**

**Includes public facilities:
Studio Eksotika, Gallery and
Beachfront, Spa and Gym.**

potato head suites only

Inventory 58 Suites

**Excludes public facilities:
Studio Eksotika, Gallery and
Beachfront, Spa and Gym.**



feast



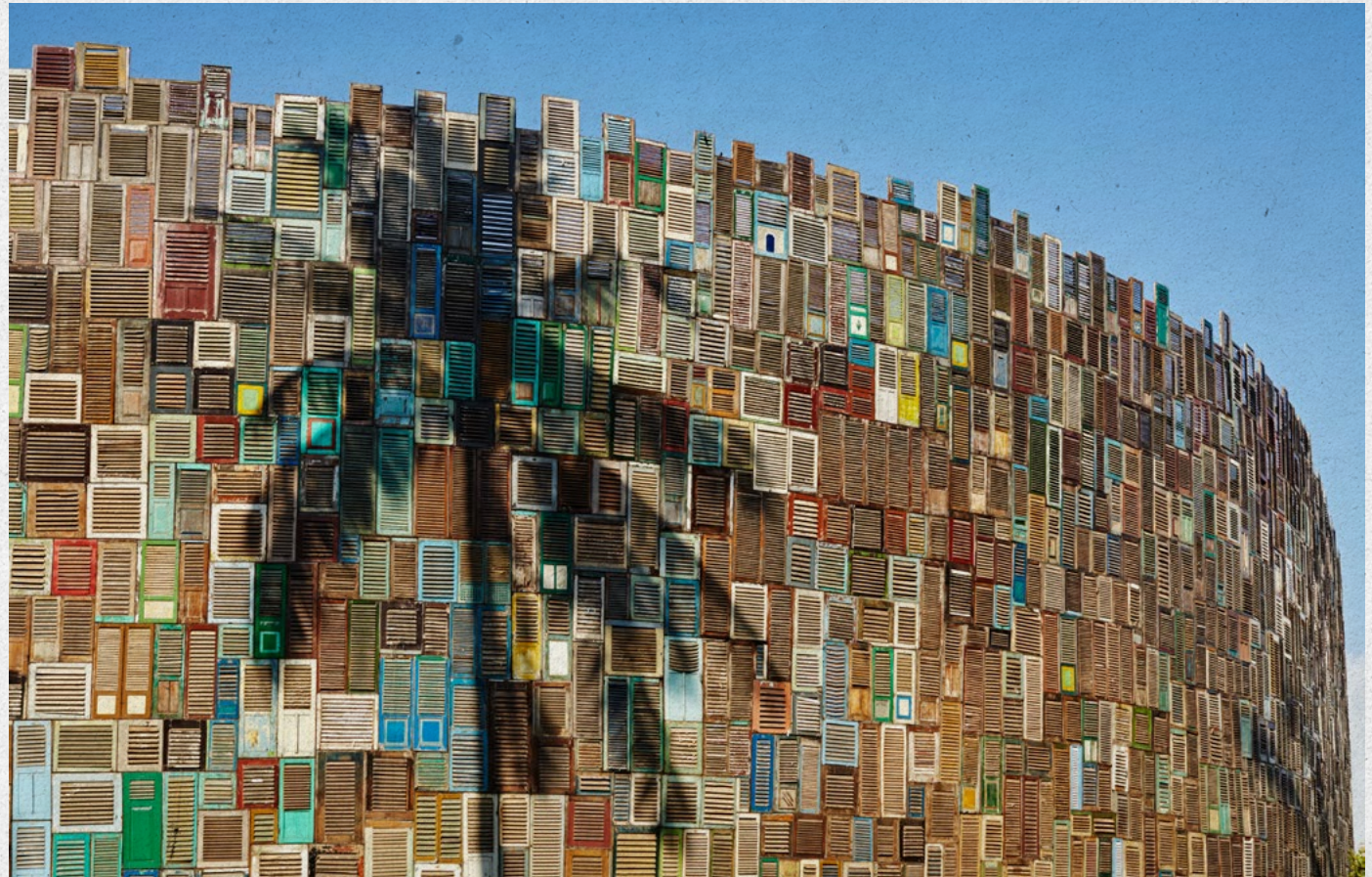


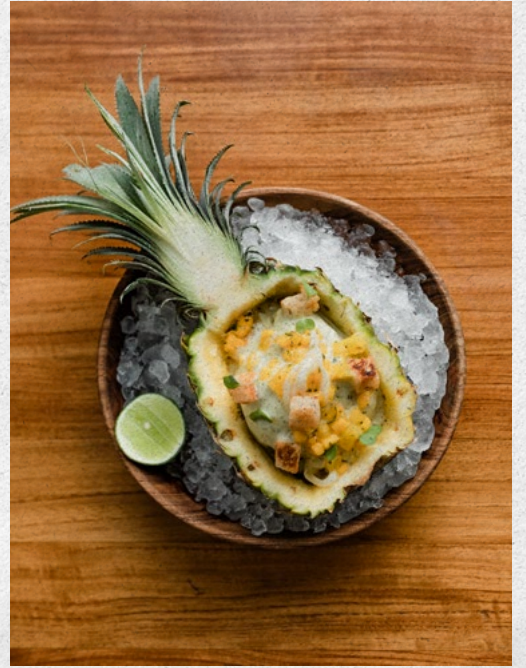
beach club

Whether it's in our infinity pool, on a daybed, under the shade of swaying palms, or at one of our restaurants, you are invited to swim, eat, sip and relax any way you like.

Soak in the vibrant atmosphere as you enjoy an extensive offering of international comfort foods and cocktails charged with local spirits, fruits and spices.

| | |
|-------------------|--|
| TOTAL AREA | 3285sqm |
| SEATED OCCUPANCY | 550pax |
| OPERATIONAL HOURS | sunday to thursday: 9am-12am friday and saturday: 9am-2am |







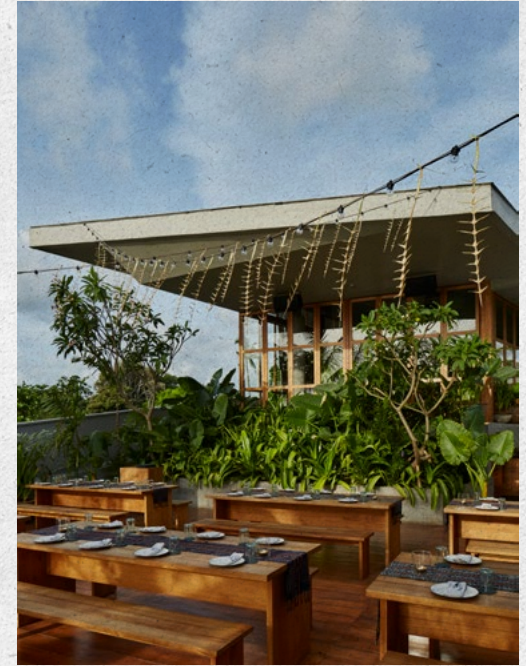
kaum

Kaum showcases lesser-known Indonesian flavours, featuring handpicked recipes from around the archipelago.

Translating to 'tribe' in Indonesian, Kaum is an authentic reflection of Indonesian ingredients, flavours and indigenous cooking methods. Passed down from generation to generation, our recipes are rarely shared outside of the islands. From bamboo grilling to fermentation, pit roasting to skewer grilling, we use traditional cooking techniques to represent the wide variety of Indonesian food.

| | |
|-------------------------------|---------------------------------|
| TOTAL AREA (INDOOR & OUTDOOR) | 376sqm |
| SEATED OCCUPANCY | 118pax |
| OPERATIONAL HOURS | open everyday. 12pm–10pm |





As well as offering new flavours to explore, our menu provides an opportunity to learn about the origins of the dishes, introducing diverse regions of Indonesia like Aceh, Sulawesi, Maluku and Sumatra.

To pair with the spicy flavours of the food, our drinks list offers cocktails that experiment with fruit and spice-infused local spirits.



ijen

If you're looking for delicious local seafood, Ijen is the place.

We use Indonesia's freshest produce, carefully selected by our growing, farming and fishing community. A nothing-left-over culinary experience that brings out the natural tastes of the raw ingredients by combining contrasting flavours. Our Ijen dishes are made with minimal waste and maximum care in mind.

| | |
|-------------------|--------------------------|
| TOTAL AREA | 182sqm |
| SEATED OCCUPANCY | 65pax |
| OPERATIONAL HOURS | open everyday. 12pm–10pm |





pizza garden

Open-air dining in a relaxed oceanside setting, with international comfort food served alongside specially selected cocktails and drinks.

From pasta with homemade sauces to Roman-style flatbread pizza, fresh salads to market fish, the menu is designed with simplicity in mind. Evening dinners at the Paradiso remind us of the carefree feeling of summertime meals shared with family and friends.

| | |
|-------------------|--------------------------|
| TOTAL AREA | 238sqm |
| TOTAL OCCUPANCY | 40pax |
| OPERATIONAL HOURS | open everyday. 12pm–10pm |



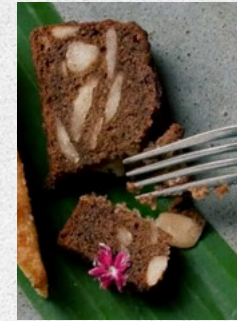


tanaman

Casual Plant-Based

Working closely with local regenerative farmers, we offer vegetarian food and drinks made from Bali's highest-quality produce. Our plant-focused menu is centred around whole, minimally processed, unrefined, and organic plant foods in their natural state. Balancing nutrition with deliciousness, focusing on natural foods while working with organic farmers. We honour the entire plant – from root to fruit – using every part of the vegetable; with stocks, oils, flavoured salts, and ferments making sure nothing goes to waste.

| | |
|-----------------------|--|
| TOTAL AREA | 100sqm |
| TOTAL SEATED CAPACITY | 40pax |
| OPERATIONAL HOURS | open everyday. lunch 11.00am - 4.00pm, dinner: 5.00pm - 10.00 pm |





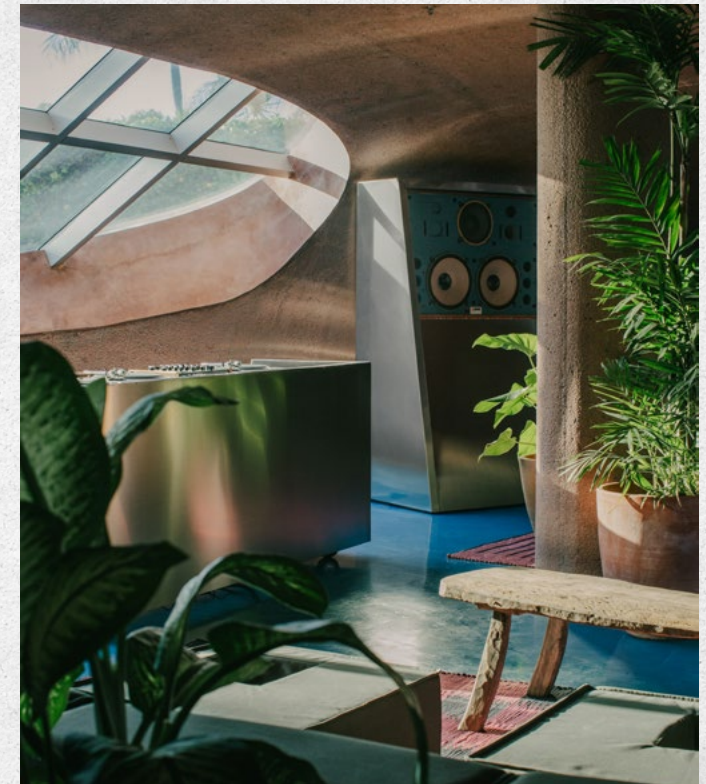
dome

Natural food and wine from Spaceship Earth

Dome is an everyday restaurant and natural wine bar serving a changing menu of small plates and funky ferments.

A hub of culinary arts and creativity, it's a social space where food, wine, music and the arts intertwine. Inspired by the Dome Home of celebrated architect, futurist and godfather of the green movement, Buckminster Fuller, it's a place to mix, meet and mingle with like-minded people.

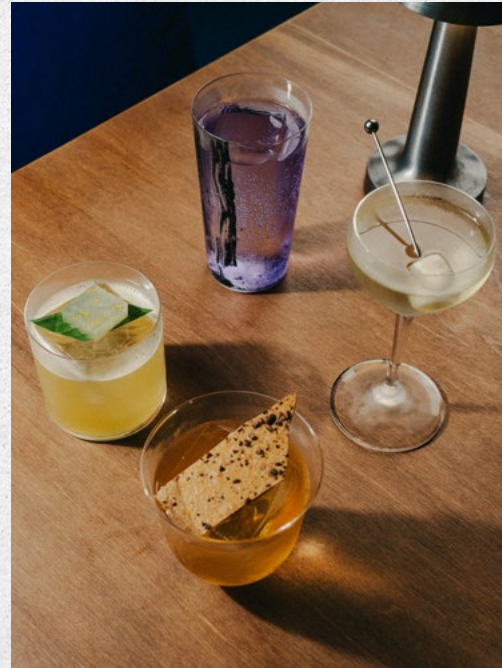
| | |
|----------------------|--|
| TOTAL AREA | 513sqm |
| TOTAL OCCUPANCY | 126pax |
| TOTAL DINING | 70pax |
| TOTAL BAR AND LOUNGE | 56pax |
| OPERATIONAL HOURS | Wednesday to Sunday. Bar open from 3pm, dinner 5pm-11pm |





The food menu is an invitation to explore the best locally sourced produce, showcasing easygoing flavours and delicately spiced accents. The emphasis here is on low intervention, with the inherent quality of the ingredients taking centre stage.

The wine menu, too, has been carefully selected to present tempting natural wines and regional variants designed to appeal to both seasoned wine lovers and newcomers – each with distinct flavours selected to combine with the dishes on offer.





beachfront dining

Open-air dining in a relaxed oceanside setting, with international comfort food served alongside specially selected cocktails and drinks.

From pasta with homemade sauces to Roman-style flatbread pizza to market fish, the menu is designed with simplicity in mind. Evening dinners at the Paradiso remind us of the carefree feeling of summertime meals shared with family and friends.

| | |
|-------------------|-------------------------|
| TOTAL AREA | 200sqm |
| SEATED OCCUPANCY | 100pax |
| OPERATIONAL HOURS | open everyday. 5pm—10pm |







sunset park



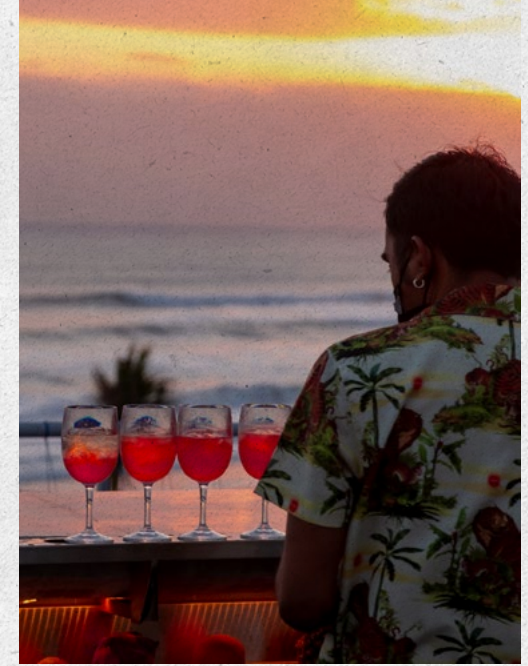
Our oceanside rooftop bar, where cocktails and snacks come with sundown views.

Whether chatting with friends and loved ones or admiring the surroundings, Sunset Park is made for get-togethers.

| | |
|-------------------|------------------------------------|
| TOTAL AREA | 582sqm |
| SEATED OCCUPANCY | 300pax |
| OPERATIONAL HOURS | open everyday. 5pm—10pm |



Sunset Park's drinks curation reimagines classics with an Indonesian twist — think watermelon spritzers or martinis spiked with dragon fruit gin — using locally-sourced spirits and infusing them in-house. All these and more are served in a spacious setting, with our upcycled furniture and innovative design seamlessly merging into the natural surroundings. Relaxed and breezy, it's a place to come as you are.







MICE Menu





MICE SET MENU & CANAPES

starters

bread basket (d)

warm brioche rolls, served with herb butter

tuna salad (s)

sashimi grade tuna, assorted green lettuce, cherry tomatoes and honey mustard dressing

croquettes (p)

white fish, ham, aioli

mains and sides

12-hours smoked beef brisket

coffee wood smoked beef brisket, jus
roasted chicken
half organic baby chicken, aromatic butter, chicken Jus

king prawn

chargrilled king tiger prawn, aromatic allium paste, chives

mashed potatoes (d)

creamy mashed potatoes, butter and parmesan

roasted veggie (pb)

over roasted seasonal vegetables, verde sauce

sweets

chocolate

dark chocolate, cocoa sponge, burnt butter & roast chocolate ice cream, chocolate soil

(v) vegetarian (pb) vegan, plant-based (s) seafood (p) pork (d) dairy (n) nuts





experiences





wellness

under the rising sun



Activate your morning as you are guided in a meditation against the backdrop of the rising sun, the sound of the ocean and nature's breeze. Find yourself tuned into frequency of the day by aligning your breath, through stretching, and Qigong movements. Conclude your session with a jamu shot and an oracle card.

sound healing



Step into the energetically warm and inviting MERASA Space and join us for a Sound Healing session that will feel like coming home. Our practitioner will weave together a tapestry of sounds and take you on a journey that will allow you to release from your anxieties and enter a state of deep relaxation.

yoga



This all-level yoga session helps increase flexibility, endurance, and strength, leaving you both energised and Zen as you free your mind, body, and spirit.



sustainability + cultural programs

follow the waste tour



Without proper waste infrastructure on the island, we do our bit and manage all of our waste in-house to ensure that as little of it goes to landfill as possible. Peek behind the scenes and learn about how we take your waste and reimagine it into the beautiful furniture, amenities and objects found throughout the Desa in our 'Follow the Waste' Tour.

Waste Tour and Workshop included candle making workshop and coffee and tea break

nasi bungkus



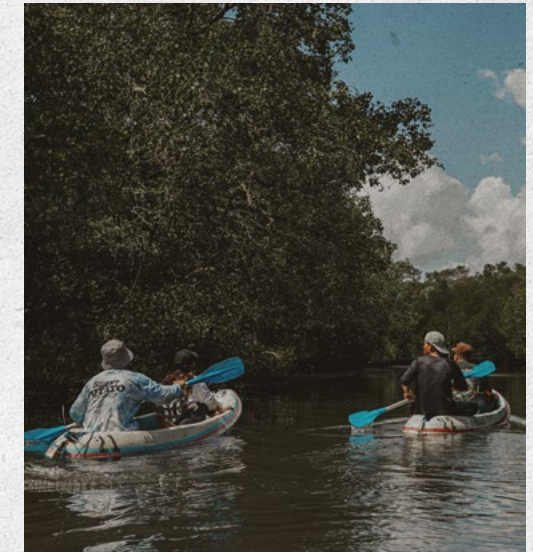
Do Good with us Sweet Potato Project started as a food relief operation during covid but today, is continuing to feed at-risk members of the Balinese community. Using produce grown from our regenerative farm in Tabanan, every Thursday and Sunday, volunteers come together to make hundreds* of serves of nasi bungkus.

morning beach clean up



A leisurely walk with a balanced approach, the Morning Beach Clean Up invites you to embrace mindfulness while helping to clean up Petitenget Beach. We start at the Desa before strolling along the beach, clearing up trash as our guides share information about Bali's waste challenge. We'll stop for a moment of reflection before heading back to the Desa, visiting the on-site waste facility to demonstrate how we sort and process our waste before upcycling what we can in ever more imaginative ways.

mangrove conservation



Did you know that, within the first 25 years of its life, a single mangrove tree can remove 0.3 tonnes of carbon from the atmosphere? That's 2-4 times more than mature rainforest trees and is equivalent to the emissions released by a petrol car being driven for around 1180 km.

Our mangrove conservation project is a fun way to contribute to making our world better. Join us as we take a canoe ride through the mangroves, waste-picking as we go, before stopping to plant mangrove saplings or harvest the seeds that will grow into pollution-fighting adult trees.



sustainability + cultural programs

jamu workshop



Jamu is one of the best and most ancient health remedies from Indonesia. Familiarize yourself with this Indonesian healing method based on the medicinal properties of plants. Join us at The Womb to learn more about its secrets and benefits.

cocktail workshop



We want to share with you the secrets of Arak, our Balinese liquor, a spirit made from the coconut flower. Our Head Mixologist will explain the story of each ingredient and show how Arak can be utilized to create new different flavors. Come join us to mix your own cocktail and taste different kinds of Arak





spaces



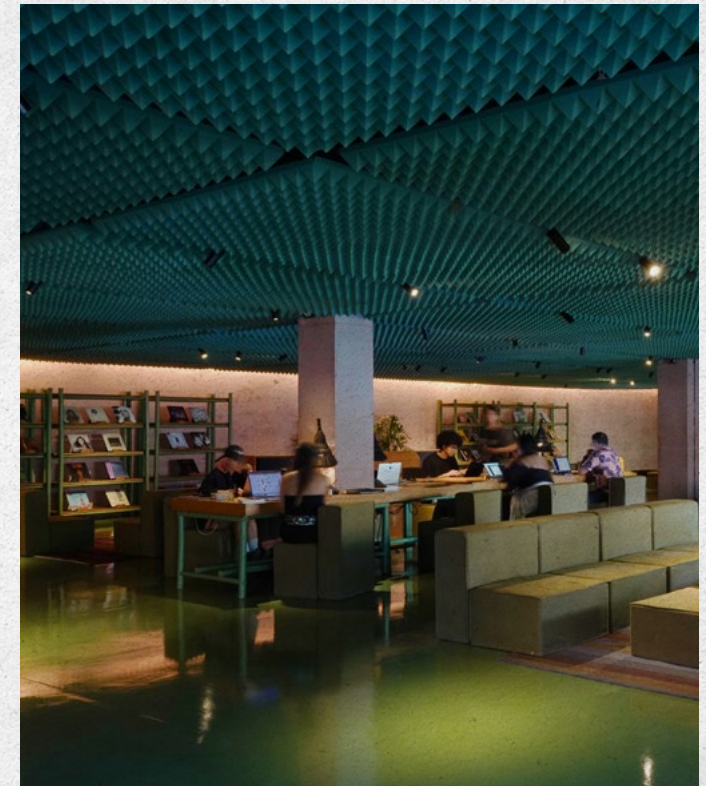
studio eksotika

Studio Eksotika is a large multi-functional room situated on the first floor of Potato Head Studios

designed for artistic installations, musical performances and inspirational talks. The sleek gallery-like space—with reflective floors and comfy couches—is outfitted with a service bar and selection of design books, encouraging guests to discover their inner creative.

| | |
|------------------|--|
| TOTAL AREA | 380sqm |
| TOTAL OCCUPANCY | 200pax |
| SEATING CAPACITY | 100pax |
| CONFIGURATION | round table, cluster, classroom and theatre style |

***configuration is subject to change based on our maximum capacity.**







gallery

Tranquil Gatherings

Nestled within the secluded confines of Studio Eksotika, our gallery space provides an exclusive area for hosting private meetings, conferences, or intimate functions, shielded from any external disturbances.

| | |
|------------------|--|
| TOTAL AREA | 358sqm |
| TOTAL OCCUPANCY | 200pax |
| SEATING CAPACITY | 100pax |
| CONFIGURATION | round table, cluster, classroom and theatre style |

***configuration is subject to change based on our maximum capacity.**







soundspace

Sound Space is our newest venue designed from ground to sound by Potato Head Design Studio in partnership with our friend the legendary DJ Harvey and the architecture studio, OMA.

From May, this multi-functional space will be offering an eclectic programme of sonic experiences that includes a listening bar, cinema screenings, morning raves, conferences, and mindfulness sessions

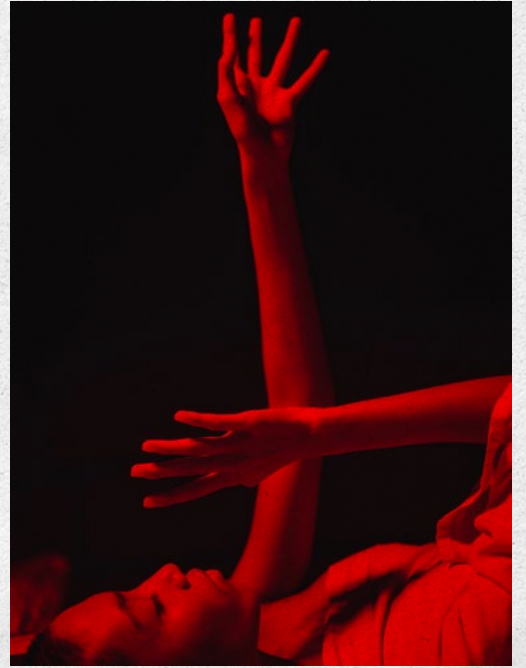
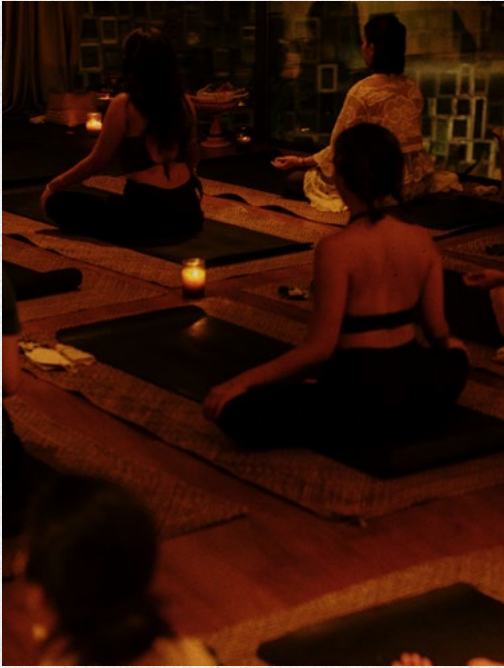
Its ultimate expression, Klymax Discotheque, is now open every Friday and Saturday. Showcasing international and resident DJs through house, disco and techno dance-infused nights.

TOTAL DANCE FLOOR **210sqm**

TOTAL OCCUPANCY **400pax**

*configuration is subject to change based on our maximum capacity.









around the desa

bamboo garden



Electric Yoga session at 'RESET' Wellness Festival.

sweet potato kids



Tie-dye workshop led by Sustainability team at the Desa.

amphitheatre



Desa group workout at the Amphitheatre.



meeting packages



packages

half day meeting

**1 coffee/tea break
1 restaurant lunch**

**IDR 700.000
per person / day**

**Complimentary Usage
Meeting Room (4 hours)**

full day meeting

**2 coffee/tea breaks
1 restaurant lunch**

**IDR 900.000
per person / day**

**Complimentary Usage
Meeting Room (8 hours)**

Inclusions:

One main meeting room

Net inclusive of 11% government tax and 10% service charge

Presentation equipments: LCD projector and screen, whiteboard, flipchart

Audio equipments: Sound system, two microphones

Free-flow: coffee and tea, filtered water and mints,

Stationery: Writing pads and pencils





All images courtesy of Hypebeast Indonesia ©2023



Awards



THE WORLD'S 50 BEST HOTELS AWARDS

Desa Potato Head has been included in the first ever 'The World's 50 Best Hotels awards'

[Read More](#)



TRAVEL + LEISURE LUXURY AWARDS

Potato Head Suites and Studios selected number two Beach Resort

[Read More](#)



TRAVEL + LEISURE ASIA'S BEST AWARDS

Potato Head Beach Club selected number one Beach Club



TIME THE WORLD'S GREATEST PLACES

Desa Potato Head named one of TIME's 2022 World's Greatest Places, as "an artsy and sustainability-focused experience."

[Read More](#)



ICONIC AWARDS

Max Lamb study chair won in the 2022 Iconic Award by the German Design Council

[Read More](#)



CONDÉ NAST TRAVELLER - HOT LIST ISSUE

Tanaman honored in the list of Best New Restaurants in the world 2020



DEPARTURES - LEGEND AWARD

Potato Head Studios honoured in The Best New Lodges and Resorts Around the World list

[Read More](#)



TRAVEL + LEISURE - GLOBAL VISION AWARD

Potato Head Studios one of 2020's honourees as Leaders in sustainable and responsible travel products, practices, and experiences

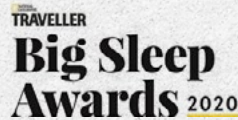
[Read More](#)



ARCHITECTURAL DIGEST - GREAT DESIGN AWARDS

Potato Head Studios awarded the Architectural Digest's 2020 AD Great Design Awards for hotels

[Read More](#)



NATIONAL GEOGRAPHIC - THE BIG SLEEP AWARD

Potato Head Studios awarded amongst 48 of the world's game-changing hotels in the business

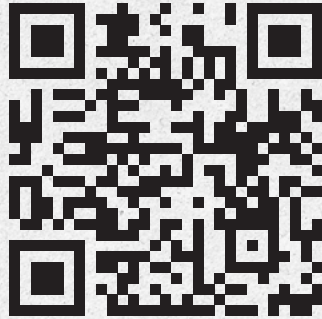
[Read More](#)



contact



Febrina Tambunan
m. +62 812 38227898
e. febrina.tambunan@potatohead.co

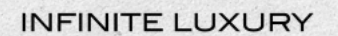


Della
m. +62 812 38167828
e. della@potatohead.co



Leona Pratiwi
m. +62 878 62277586
e. leona.pratiwi@potatohead.co

In partnership with





Desa Potato Head

Jalan Petitengget no. 51B, Seminyak
Kuta Utara — Kabupaten Badung
Bali — 80361, Indonesia
e. seminyak@potatohead.co

Good Times, Do Good

potatohead.co